

Exploring the Education Profile and Pipeline for Puerto Ricans and Hispanics in Central Florida

Hispanic Summit
June 28-29, 2007

Anthony De Jesús
Daniel W. Vasquez



Total Population Change by Race

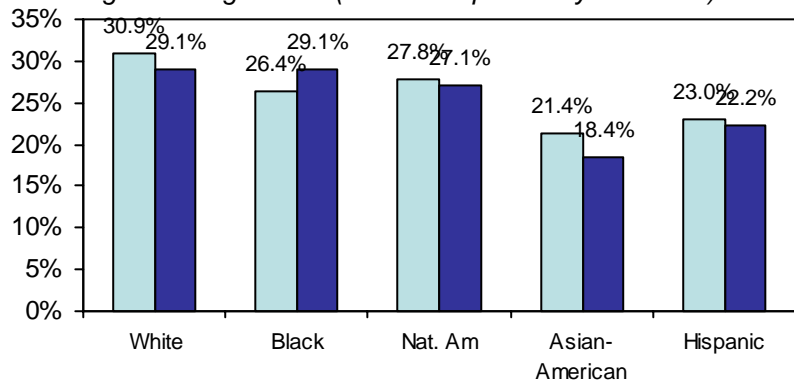
Central Florida & State of Florida, 1990 and 2000

						Level	Percent	Change in
Central Florida	2000	Percent	1990	Percent		Change	Change	Percent
Total	1,644,561	100.0%	1,167,406	100.0%		477,155	40.9%	-
White	1,234,451	75.1%	888,648	76.1%		345,803	38.9%	-1.1%
Black	225,415	13.7%	132,796	11.4%		92,619	69.7%	2.3%
American Indian, Eskimo, or Aleut	5,599	0.3%	3,704	0.3%		1,895	51.2%	0.0%
Asian or Pacific Islander	43,610	2.7%	20,332	1.7%		23,278	114.5%	0.9%
Other race	82,662	5.0%	27,268	2.3%		55,394	203.1%	2.7%
Hispanic	271,425	16.5%	94,658	8.1%		176,767	186.7%	8.4%
						Level	Percent	Change in
State of Florida	2000	Percent	1990	Percent		Change	Change	Percent
Total	15,982,378	100.0%	14,492,957	100.0%		1,489,421	10.3%	-
White	12,463,302	78.0%	10,755,698	74.2%		1,707,604	15.9%	3.8%
Black	2,312,105	14.5%	1,755,958	12.1%		556,147	31.7%	2.4%
American Indian, Eskimo, or Aleut	54,428	0.3%	42,619	0.3%		11,809	27.7%	0.0%
Asian or Pacific Islander	271,189	1.7%	150,200	1.0%		120,989	80.6%	0.7%
Other race	472,333	3.0%	233,451	1.6%		238,882	102.3%	1.3%
Hispanic	2,680,314	16.8%	1,555,031	10.7%		1,125,283	72.4%	6.0%

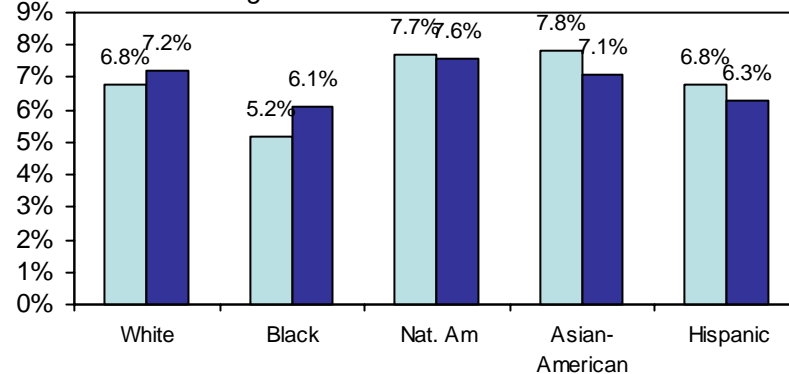
Educational Attainment by Race

State of Florida, 1990 & 2000

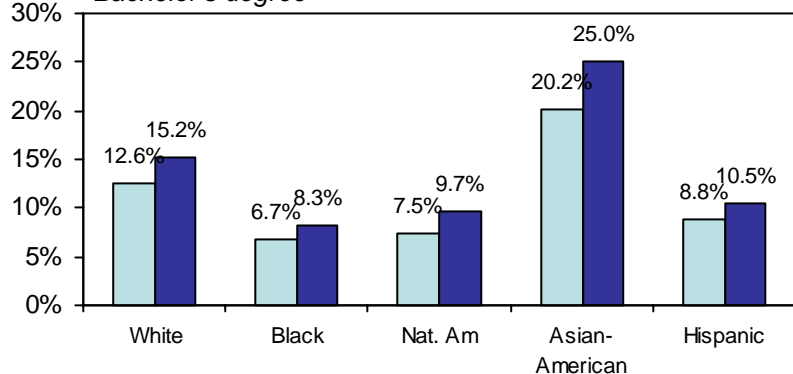
High school graduate (includes equivalency and other)



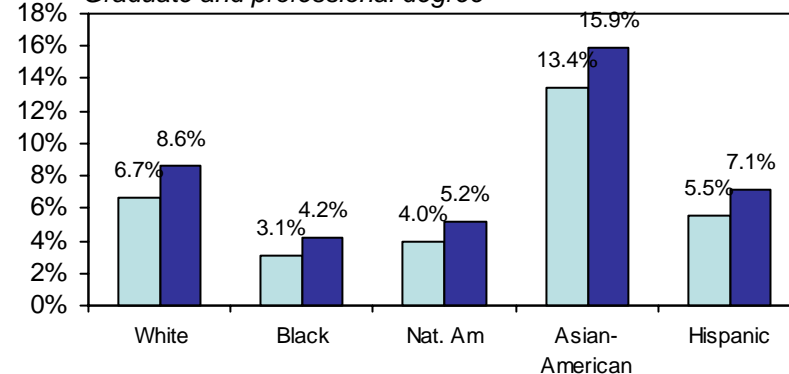
Associates degree



Bachelor's degree



Graduate and professional degree



1990

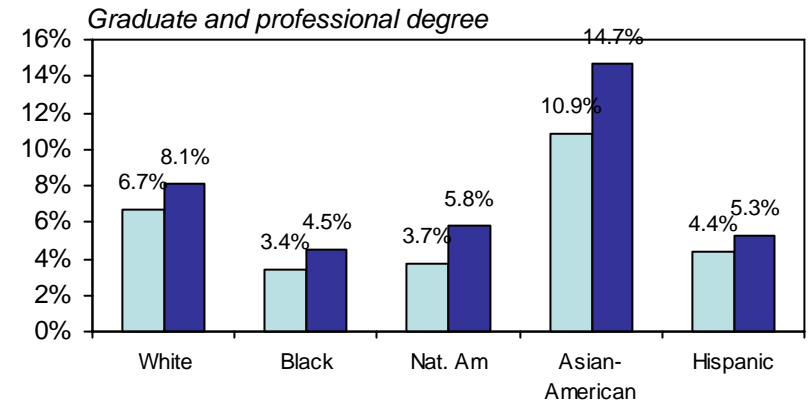
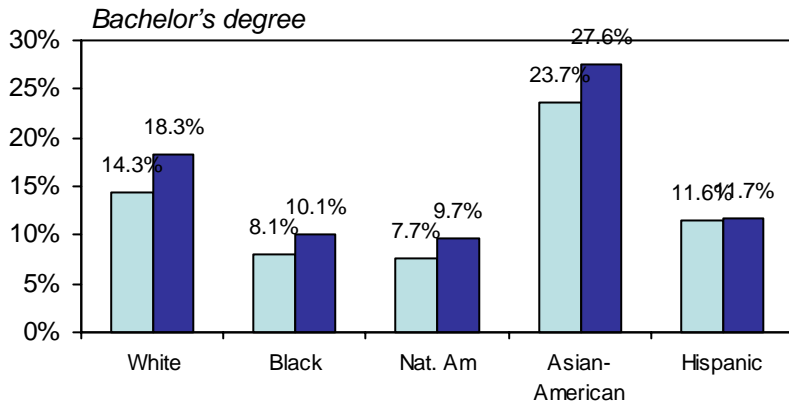
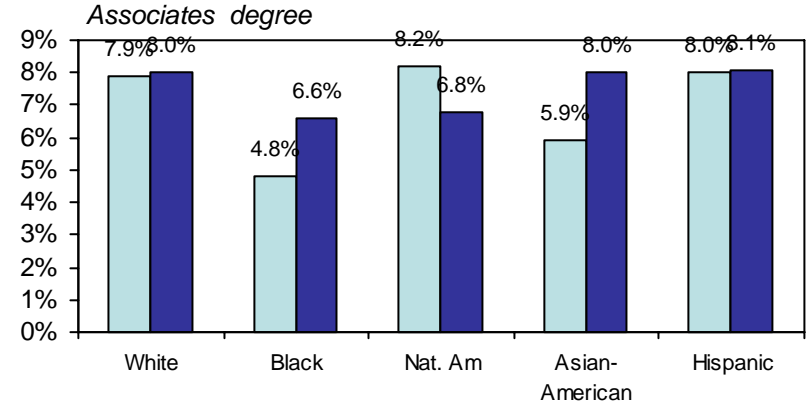
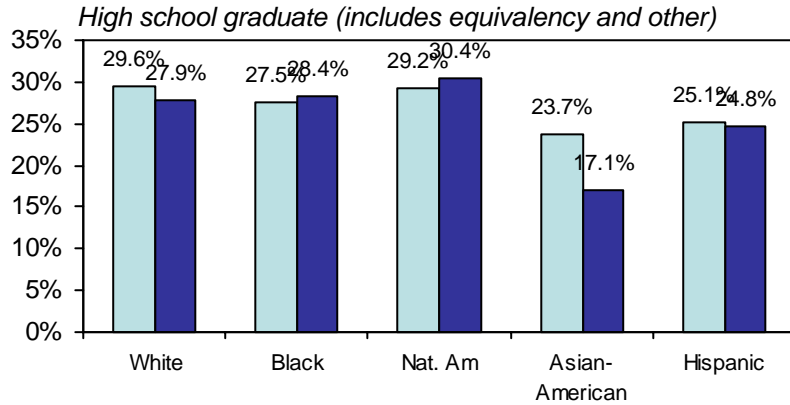
2000

	White	Black	Nat. Am.	Asian-Am	Latino
Population, Age 25+					
2000	9,052,318	1,285,014	35,349	177,298	1,695,497
1990	7,691,434	946,774	27,439	91,730	996,125

Source: 1990 & 2000 US Census data (SF-3 release).

Educational Attainment by Race

Central Florida, 1990 & 2000



1990

2000

	White	Black	Nat. Am.	Asian-Am	Latino
Population, Age 25+					
2000	854,101	125,139	3,743	28,655	154,282
1990	590,438	71,085	2,352	12,020	53,752

Source: 1990 & 2000 US Census data (SF-3 release).

Hispanic Educational Attainment by National Origin

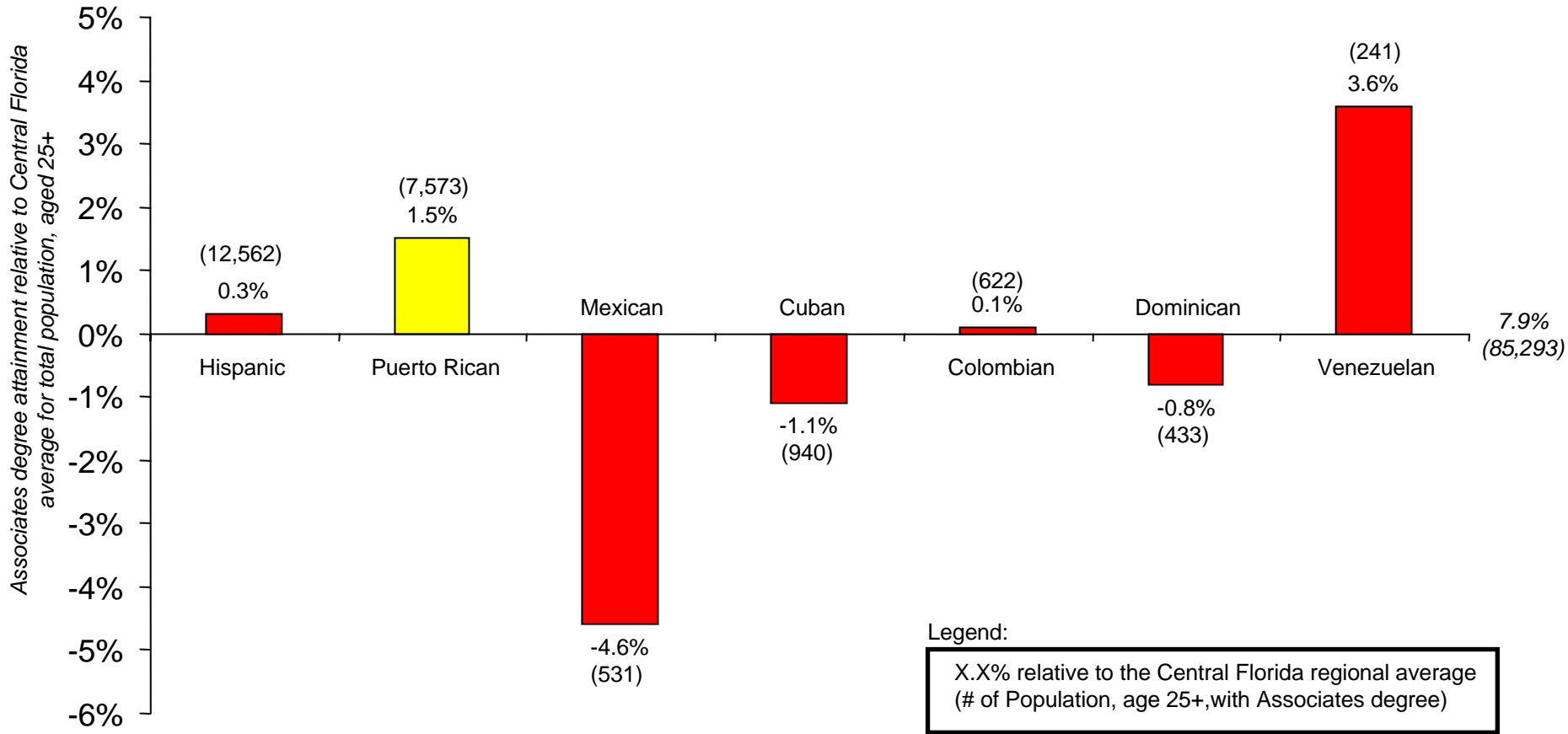
Central Florida, 2000

	Central Florida	Hispanic	Puerto Rican	Mexican	Cuban	Colombian	Dominican	Venezuelan
Total:	1,083,496	154,282	80,966	16,018	13,797	7,767	6,137	2,108
Less than 9th grade	55,316	18,896	7,361	5,357	1,644	562	743	137
9th to 12th grade, no diploma	131,375	24,869	12,891	3,099	2,486	1,008	1,100	144
High school graduate (includes equivalency)	298,161	38,269	21,181	3,319	2,991	2,082	1,608	423
Some college, no degree	244,624	33,408	18,905	2,111	2,491	1,768	1,515	464
Associate degree	85,293	12,562	7,573	531	940	622	433	241
Bachelor's degree	185,614	18,048	9,874	1,094	1,927	1,001	475	461
Graduate or professional degree	83,113	8,230	3,181	507	1,318	724	263	238
Percent:	100.0%	100.0%	100.0%	100.0%	100.0%	100.0%	100.0%	100.0%
Less than 9th grade	5.1%	12.2%	9.1%	33.4%	11.9%	7.2%	12.1%	6.5%
9th to 12th grade, no diploma	12.1%	16.1%	15.9%	19.3%	18.0%	13.0%	17.9%	6.8%
High school graduate (includes equivalency)	27.5%	24.8%	26.2%	20.7%	21.7%	26.8%	26.2%	20.1%
Some college, no degree	22.6%	21.7%	23.3%	13.2%	18.1%	22.8%	24.7%	22.0%
Associate degree	7.9%	8.1%	9.4%	3.3%	6.8%	8.0%	7.1%	11.4%
Bachelor's degree	17.1%	11.7%	12.2%	6.8%	14.0%	12.9%	7.7%	21.9%
Graduate or professional degree	7.7%	5.3%	3.9%	3.2%	9.6%	9.3%	4.3%	11.3%

Source: 2000 Census, SF-4 release
 Universe: Population, age 25+

Associates Degree Attainment by Hispanic National Origin Relative to Regional Average

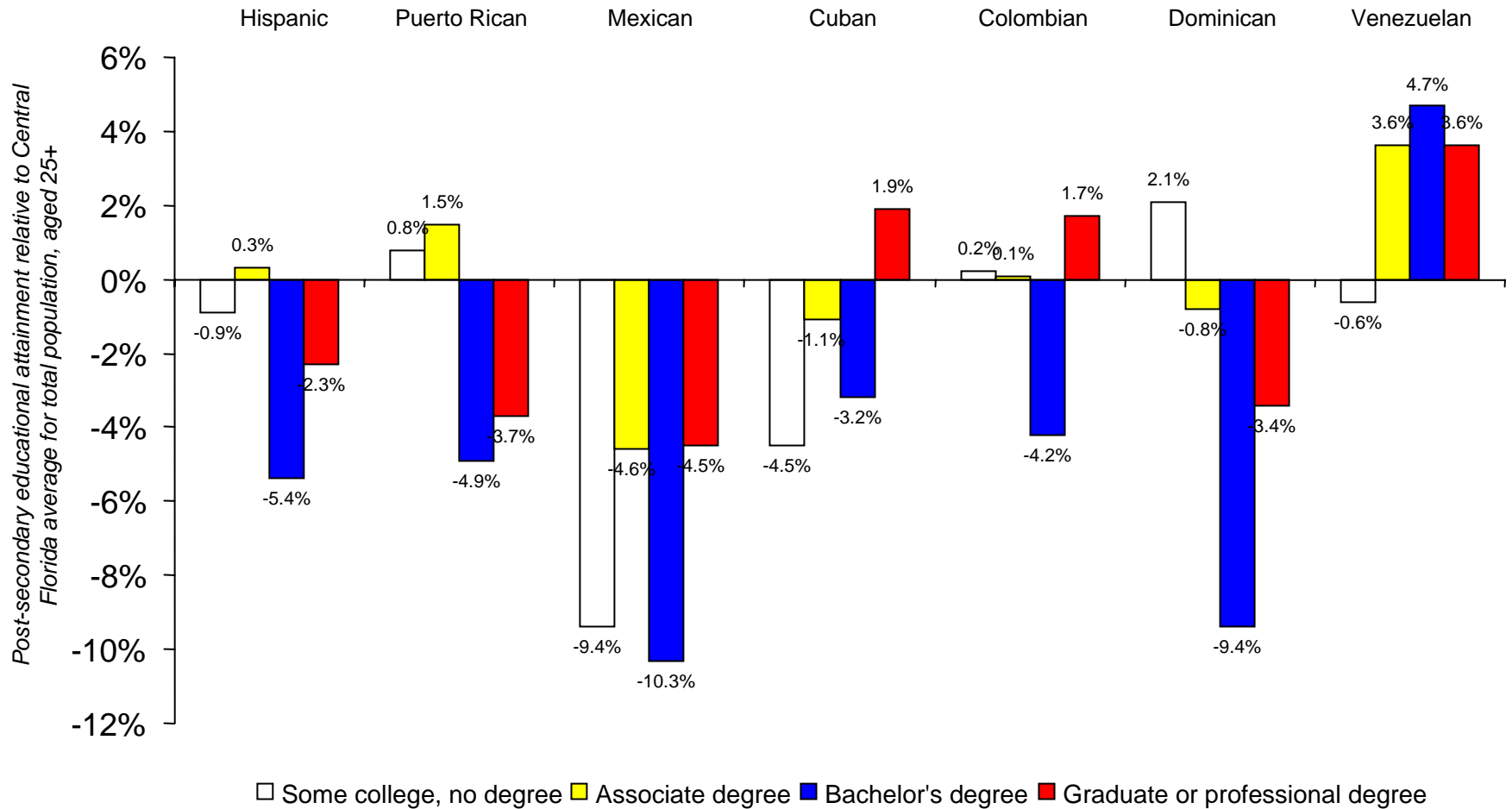
Central Florida, 2000



Source: 2000 Census, SF-4 release
 Universe: Population, age 25+

Post-Secondary Education Attainment by Hispanic National Origin Relative to Regional Average

Central Florida, 2000



Source: 2000 Census, SF-4 release
 Universe: Population, age 25+

Hispanic Student Enrollment

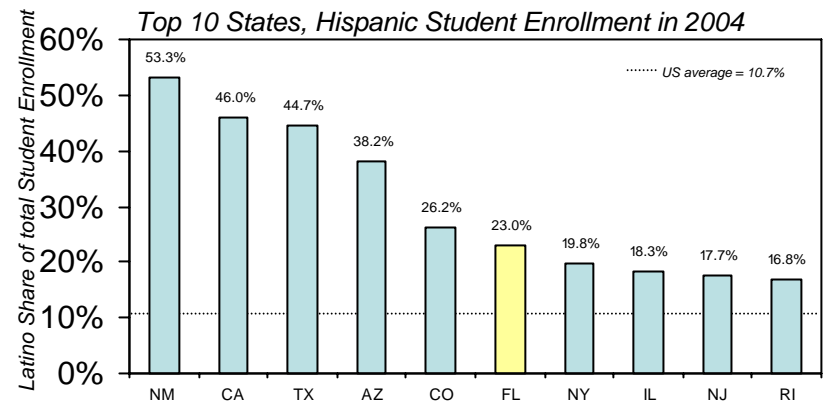
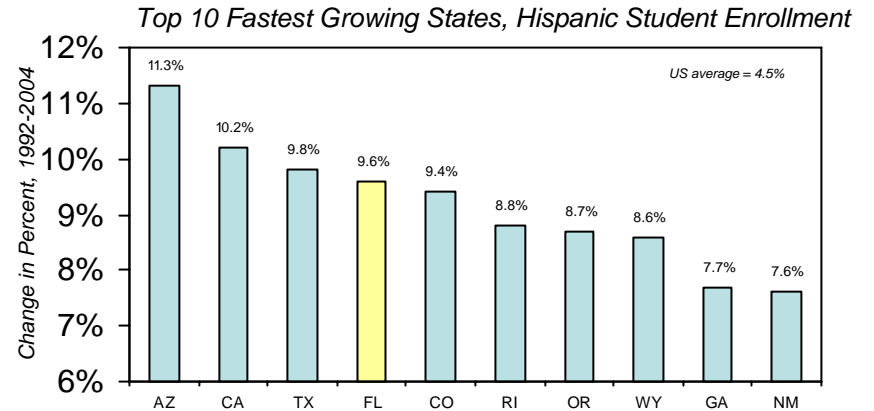
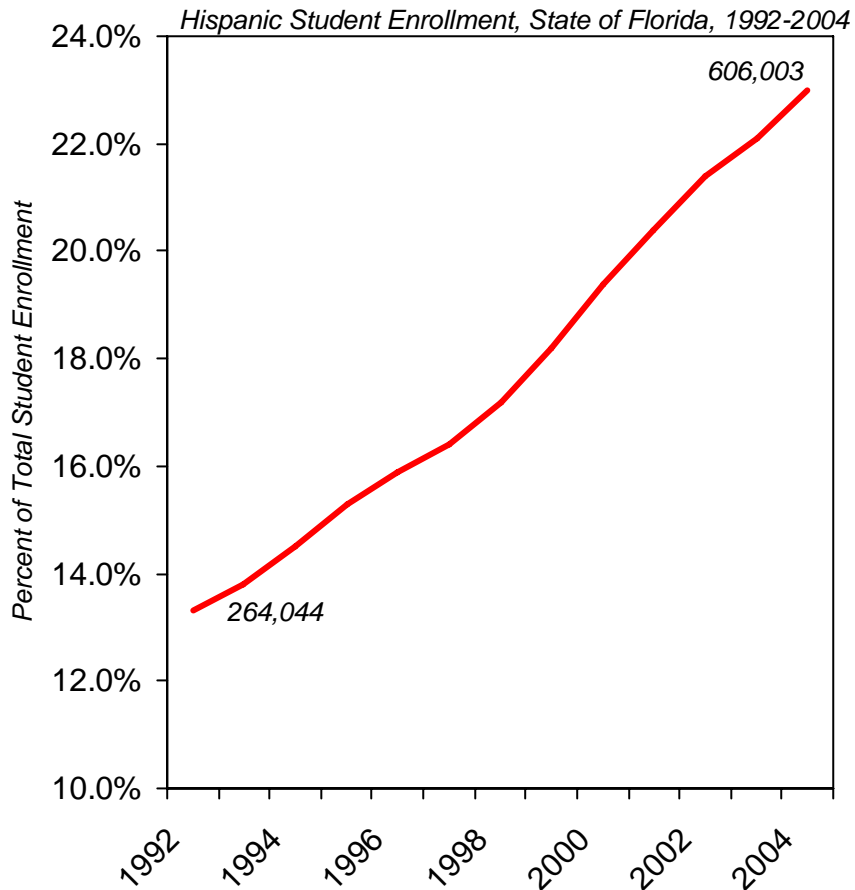
Top 10 US Metropolitan Areas, 2002

Rank (n=332)	Metro Area	# of Hispanic Students	Hispanic Share of Total Enrollment
1	SAN JUAN-BAYAMON, PR MSA	588,539	100%
2	LAREDO, TX	53,547	97.7%
3	MCALLEN- EDINBURGH-MISSION, TX	151,680	96.1%
4	BROWNSVILLE- HARLINGEN-SAN BENITO, TX	86,438	93.8%
5	EL PASO, TX	159,918	86.5%
6	LAS CRUCES, NM	37,169	77.2%
7	YUMA, AZ	31,624	72.4%
8	CORPUS CHRISTI, TX	77,272	64.4%
9	SALINAS, CA	72,719	63.3%
10	VISALIA-PORTERVILLE- TULARE, CA	86,484	62.5%
...
14	MIAMI, FL PMSA	375,836	57.5%
63	CENTRAL FLORIDA	295,080	22.2%

Source: Department of Education, NCES CCD Data.

Hispanic Student Enrollment

State of Florida, 1992-2004



Hispanic Student Enrollment

Top 10 FL School Districts, 2004

Rank (n=74)	School District	City	Metro Area	# of Students Enrolled	Hispanic Share of Total Student Enrollment	Share of Total State Hispanic Enrollment
1	DADE COUNTY SD	MIAMI	MIAMI-DADE	400,334	59.8%	36.4%
2	HARDEE COUNTY SD	WAUCHULA	...	5,146	50.9%	0.4%
3	HENDRY COUNTY SD	LA BELLE	...	7,604	49.3%	0.6%
4	OSCEOLA COUNTY SD	KISSIMEE	CENTRAL FLORIDA	47,446	48%	3.8%
5	COLLIER COUNTY SD	NAPLES	NAPLES MSA	42,105	38.6%	2.7%
6	GLADES COUNTY SD	MOOREHAVEN	...	1,237	31.5%	0.1%
7	DESOTO COUNTY SD	ARCADIA	...	4,942	28.8%	0.2%
8	ORANGE COUNTY SD	ORLANDO	CENTRAL FLORIDA	173,331	28.3%	8.1%
9	HILLSBOROUGH COUNTY SD	TAMPA	TAMPA-ST. PETERSBURGH-CLEARWATER	189,469	26%	8.1%
10	OKEECHOBEE COUNTY SD	OKEECHOBEE	...	7,348	25.5%	0.3%

Hispanic HS Diploma Recipients

Top 10 FL School Districts, 2002

Rank (n=74)	School District	City	Metro Area (PMSA)	# of Hispanic HS Diplomas	Hispanic Share of Total HS Diplomas
1	DADE COUNTY SD	MIAMI	MIAMI-DADE	8,470	52.2%
2	OSCEOLA COUNTY SD	KISSIMMEE	CENTRAL FLORIDA	499	32.2%
3	HARDEE COUNTY SD	WAUCHULA	...	54	27.8%
4	HENDRY COUNTY SD	LA BELLE	...	77	26.8%
5	DOZIER/OKEECHOBEE	CHIPLEY	...	5	25%
6	FLORIDA SCHOOL FOR THE DEAF AND THE BLIND	ST. AUGUSTINE	...	15	23.1%
7	ORANGE COUNTY SD	ORLANDO	CENTRAL FLORIDA	1,277	19.2%
8	COLLIER COUNTY SD	NAPLES	NAPLES	274	18%
9	OKEECHOBEE COUNTY SD	OKEECHOBEE	...	56	17.8%
10	HILLSBOROUGH COUNTY SD	TAMPA	TAMPA-ST. PETERSBURGH- CLEARWATER	1,375	17.8%

39					
53					
69					

Source: Department of Education, NCES CCD Data.

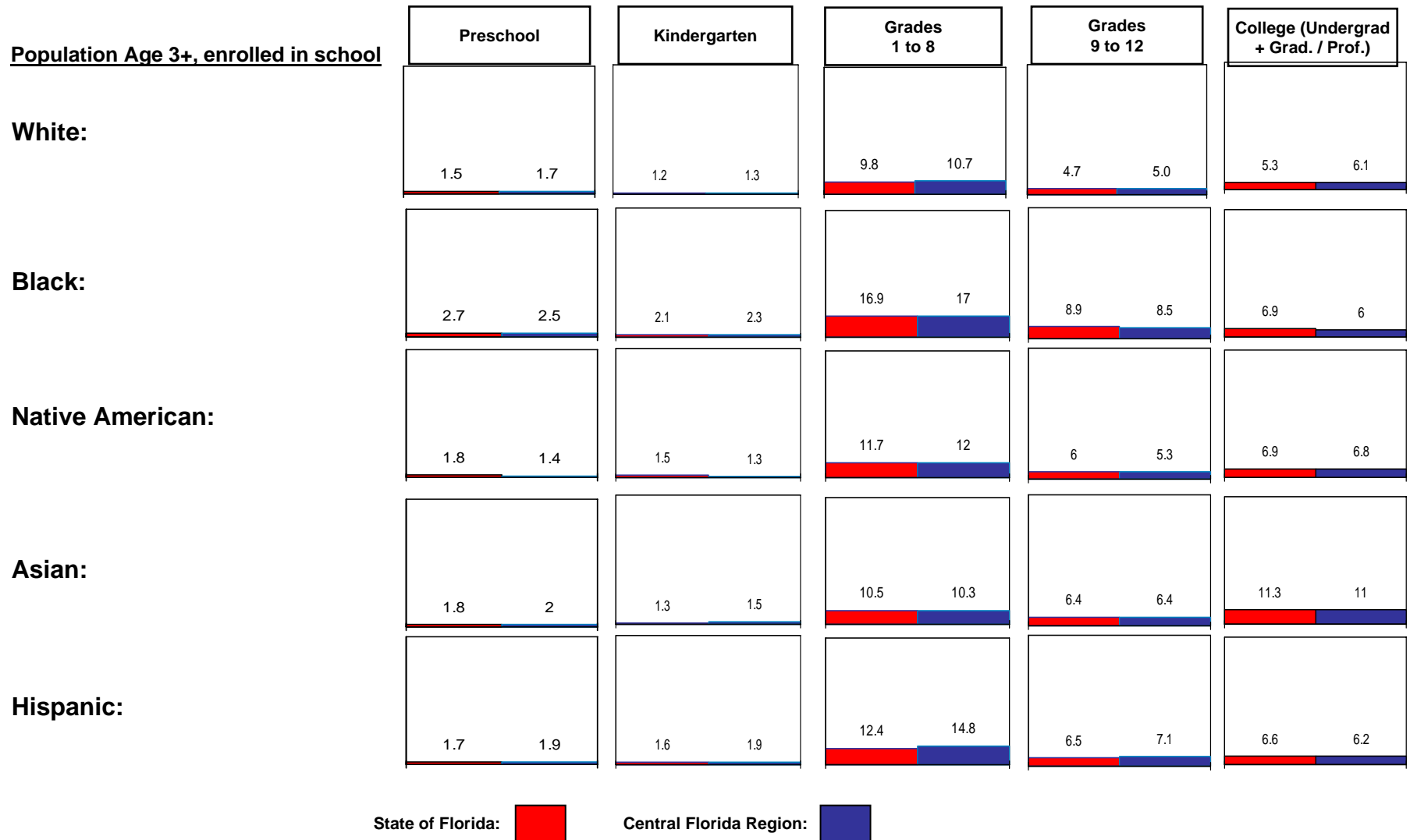
Hispanic Students in Schools

Top 50 Central Florida Schools, 2002

<u>School</u>	<u>City</u>	<u>Total Students</u>	<u>Latino Students</u>	<u>Percent</u>
1 EXPRESSIONS	KISSIMMEE	10	9	90.0
2 CYPRESS ELEMENTARY SCHOOL	KISSIMMEE	970	778	80.2
3 CENTER FOR YOUTH APPRENTICESHIP	KISSIMMEE	9	7	77.8
4 ENGELWOOD ELEMENTARY SCHOOL	ORLANDO	568	432	76.1
5 BOGGY CREEK ELEMENTARY SCHOOL	KISSIMMEE	784	589	75.1
6 OAKSHIRE ELEMENTARY SCHOOL	ORLANDO	1367	1018	74.5
7 PARKWAY MIDDLE SCHOOL	KISSIMMEE	1117	822	73.6
8 VENTURA ELEMENTARY SCHOOL	KISSIMMEE	1138	834	73.3
9 VISION	KISSIMMEE	32	23	71.9
10 KISSIMMEE ELEMENTARY SCHOOL	KISSIMMEE	1281	898	70.1
11 PINAR ELEMENTARY SCHOOL	ORLANDO	547	382	69.8
12 MCCOY ELEMENTARY SCHOOL	ORLANDO	785	547	69.7
13 CENTRAL AVENUE ELEMENTARY SCHOOL	KISSIMMEE	836	573	68.5
14 CHICKASAW ELEMENTARY SCHOOL	ORLANDO	730	499	68.4
15 DEERWOOD ELEMENTARY SCHOOL	KISSIMMEE	1520	1036	68.2
16 VENTURA ELEMENTARY SCHOOL	ORLANDO	788	531	67.4
17 STONEWALL JACKSON MIDDLE SCHOOL	ORLANDO	1163	782	67.2
18 AZALEA PARK ELEMENTARY SCHOOL	ORLANDO	935	619	66.2
19 GATEWAY HIGH SCHOOL	KISSIMMEE	2676	1765	66.0
20 MEADOW WOODS ELEMENTARY SCHOOL	ORLANDO	861	564	65.5
21 KISSIMMEE MIDDLE SCHOOL	KISSIMMEE	1224	800	65.4
22 LITTLE RIVER ELEMENTARY SCHOOL	ORLANDO	1054	688	65.3
23 HIGHLANDS ELEMENTARY SCHOOL	KISSIMMEE	890	564	63.4
24 THREE POINTS ELEMENTARY SCHOOL	ORLANDO	802	508	63.3
25 P. M. WELLS CHARTER ACADEMY	KISSIMMEE	491	306	62.3
26 DISCOVERY INTERMEDIATE SCHOOL	KISSIMMEE	1486	916	61.6
27 APOPKA ELEMENTARY SCHOOL	APOPKA	754	459	60.9
28 PROFESSIONAL & TECHNICAL HIGH	KISSIMMEE	608	369	60.7
29 THACKER AVENUE ELEMENTARY SCHOOL	KISSIMMEE	657	395	60.1
30 MEADOW WOODS MIDDLE SCHOOL	ORLANDO	1938	1161	59.9
31 POINCIANA ELEMENTARY SCHOOL	KISSIMMEE	1493	894	59.9
32 LANCASTER ELEMENTARY SCHOOL	ORLANDO	864	516	59.7
33 DENN JOHN MIDDLE SCHOOL	KISSIMMEE	1361	810	59.5
34 C.O.P.E.	SAINT CLOUD	106	62	58.5
35 POINCIANA HIGH SCHOOL	KISSIMMEE	2534	1467	57.9
36 COLONIAL HIGH SCHOOL	ORLANDO	3843	2197	57.2
37 BELLALAGO CHARTER ACADEMY	KISSIMMEE	676	384	56.8
38 LIBERTY MIDDLE SCHOOL	ORLANDO	1282	725	56.6
39 UNION PARK ELEMENTARY SCHOOL	ORLANDO	760	429	56.4
40 SADLER ELEMENTARY SCHOOL	ORLANDO	948	535	56.4
41 FOUNDATION MIDDLE ACADEMY	KISSIMMEE	240	132	55.0
42 LAWTON CHILES ELEMENTARY SCHOOL	ORLANDO	814	445	54.7
43 WALKER MIDDLE SCHOOL	ORLANDO	1137	613	53.9
44 CYPRESS CREEK SENIOR HIGH SCHOOL	ORLANDO	2990	1610	53.8
45 ENDEAVOR	KISSIMMEE	43	23	53.5
46 UNION PARK MIDDLE SCHOOL	ORLANDO	1389	734	52.8
47 UCP OSCEOLA CHILD DEVELOPMENT	KISSIMMEE	55	29	52.7
48 PARTIN SETTLEMENT ELEMENTARY SCHOOL	KISSIMMEE	970	509	52.5
49 CHENEY ELEMENTARY SCHOOL	ORLANDO	663	345	52.0
50 KISSIMMEE CHARTER ACADEMY	KISSIMMEE	647	329	50.9

2000 Education Pipeline by Race

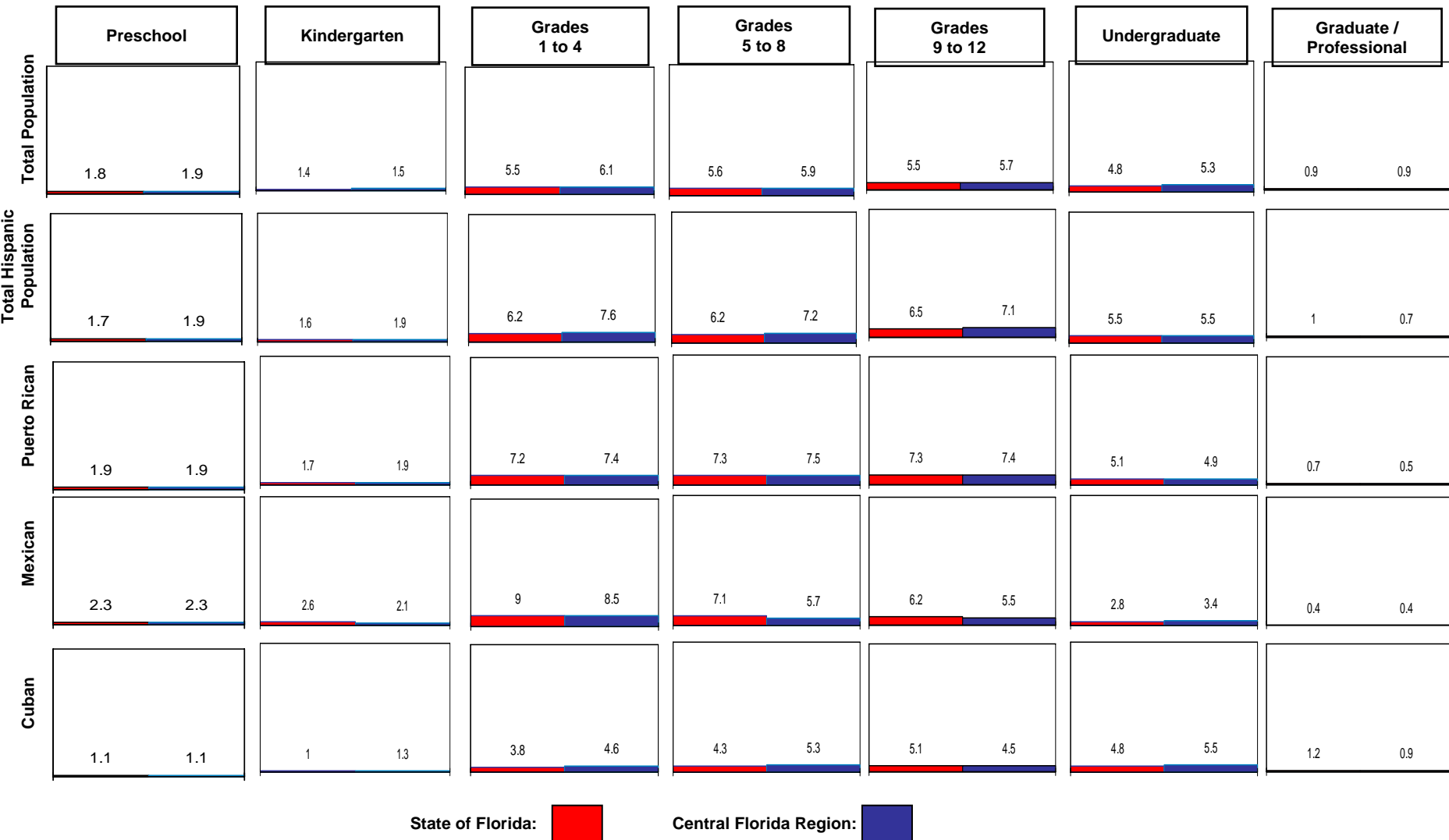
Central Florida Region, School Enrollment, Percent of Population Aged 3+



Source: 2000 US Census data (SF-3 release).

2000 Hispanic Education Pipeline by National Origin

Central Florida Region, School Enrollment, Percent of Population Aged 3+

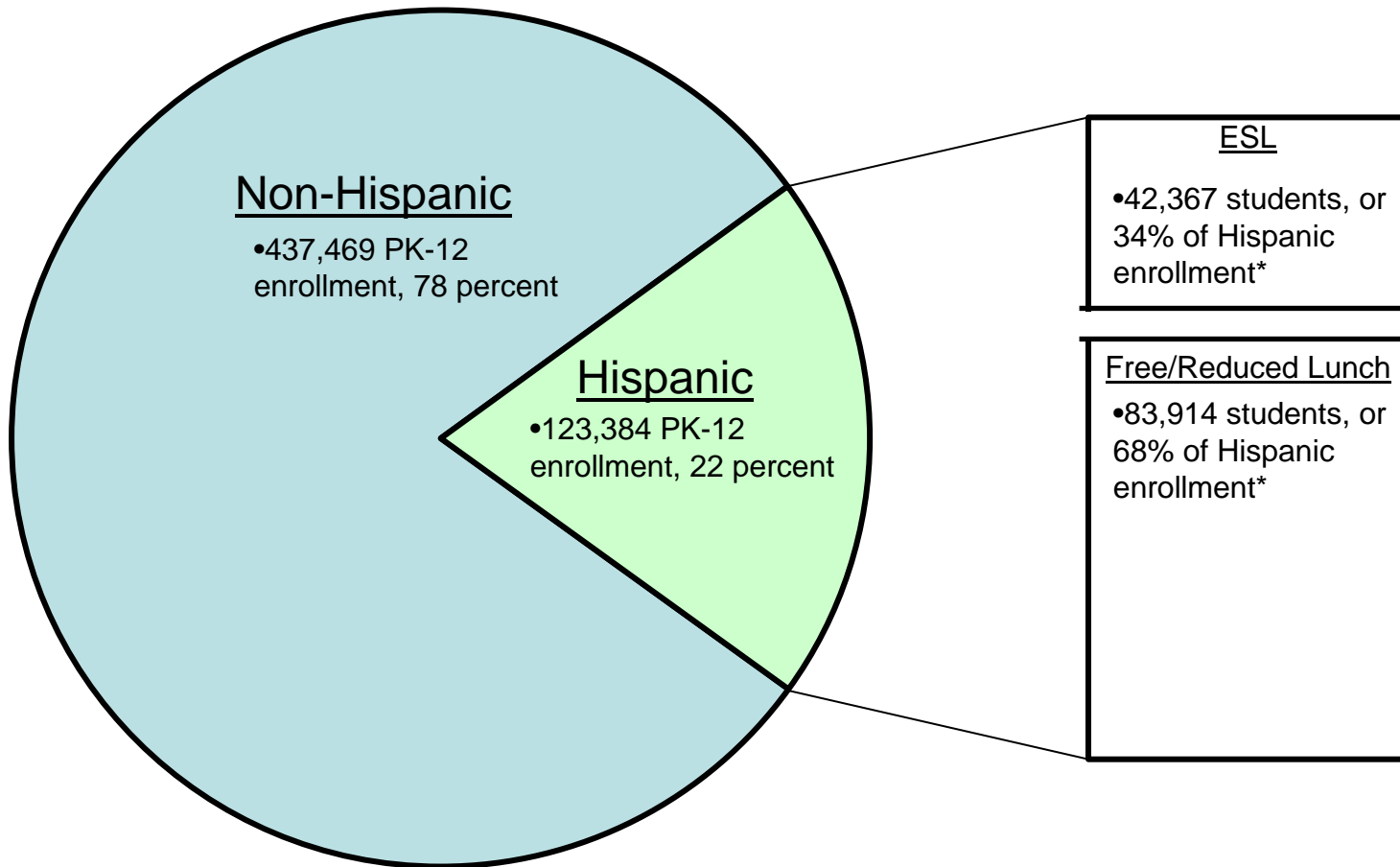


Source: 2000 US Census data (SF-4 release).

Hispanic ESL and Free/Reduced Lunch Status

Percent of Total and Hispanic Enrollment in Central Florida, 2005

Total PK-12 enrollment in Central Florida: 560,853



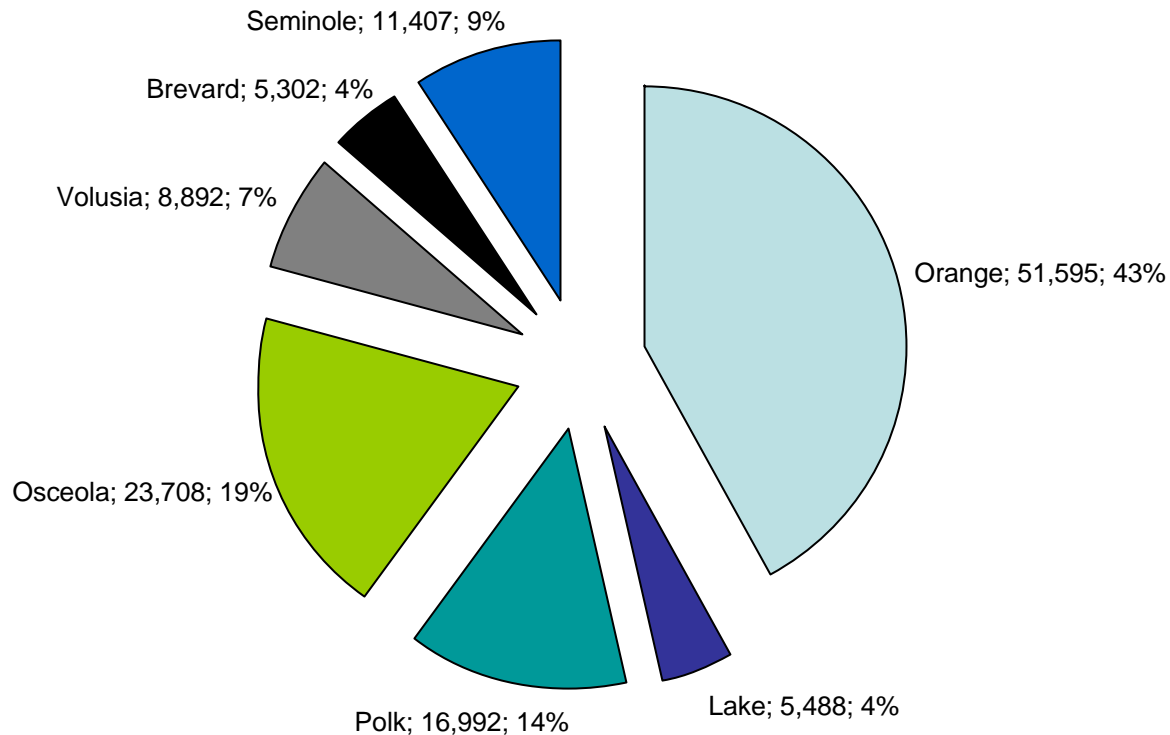
Note: * Numbers do not equal 100 percent due to overlapping categories of data: some Hispanic ESL students receive free or reduced lunches; conversely, some Hispanic students who receive free or reduced lunches are also enrolled in ESL.

Source: State of Florida, Department of Education.

Hispanic Students in Central Florida Region by County

Number & Percent of Total, 2005

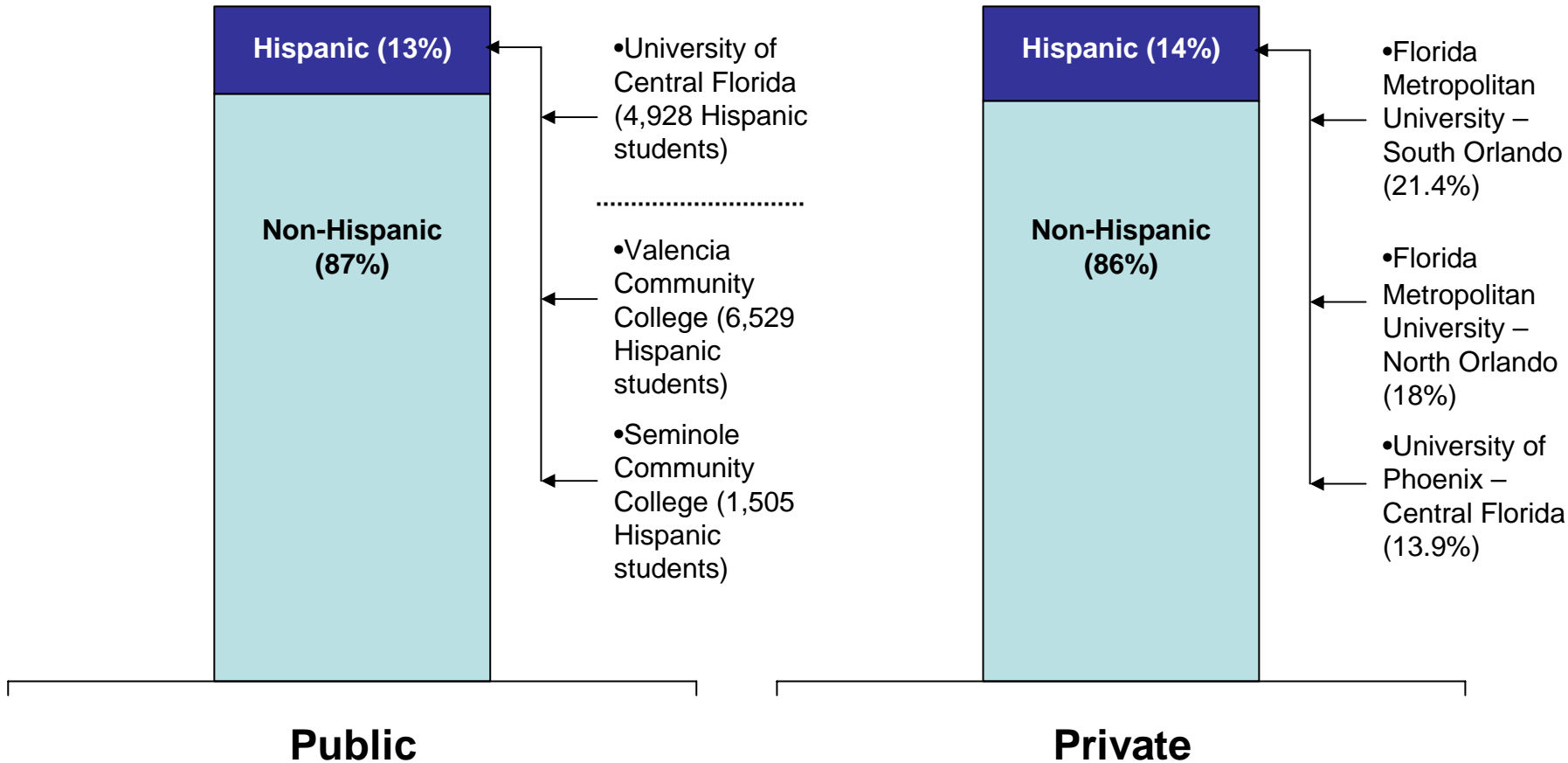
Total Hispanic PK-12 enrollment in Central Florida: 123,384



Hispanic Post-Secondary Enrollment in Central Florida, 2005

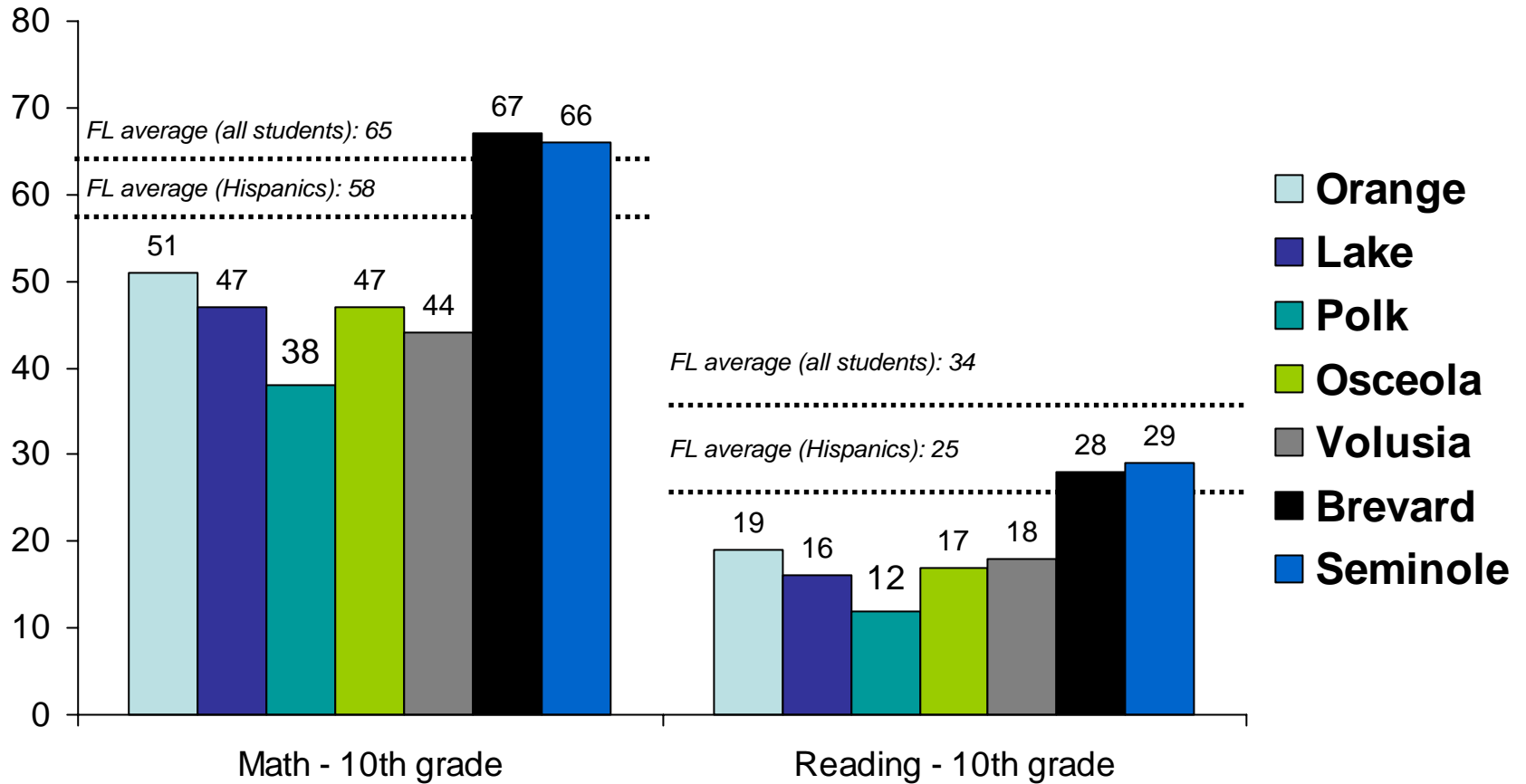
Total Public University Enrollment = 120,718

Total Private University Enrollment = 10,412

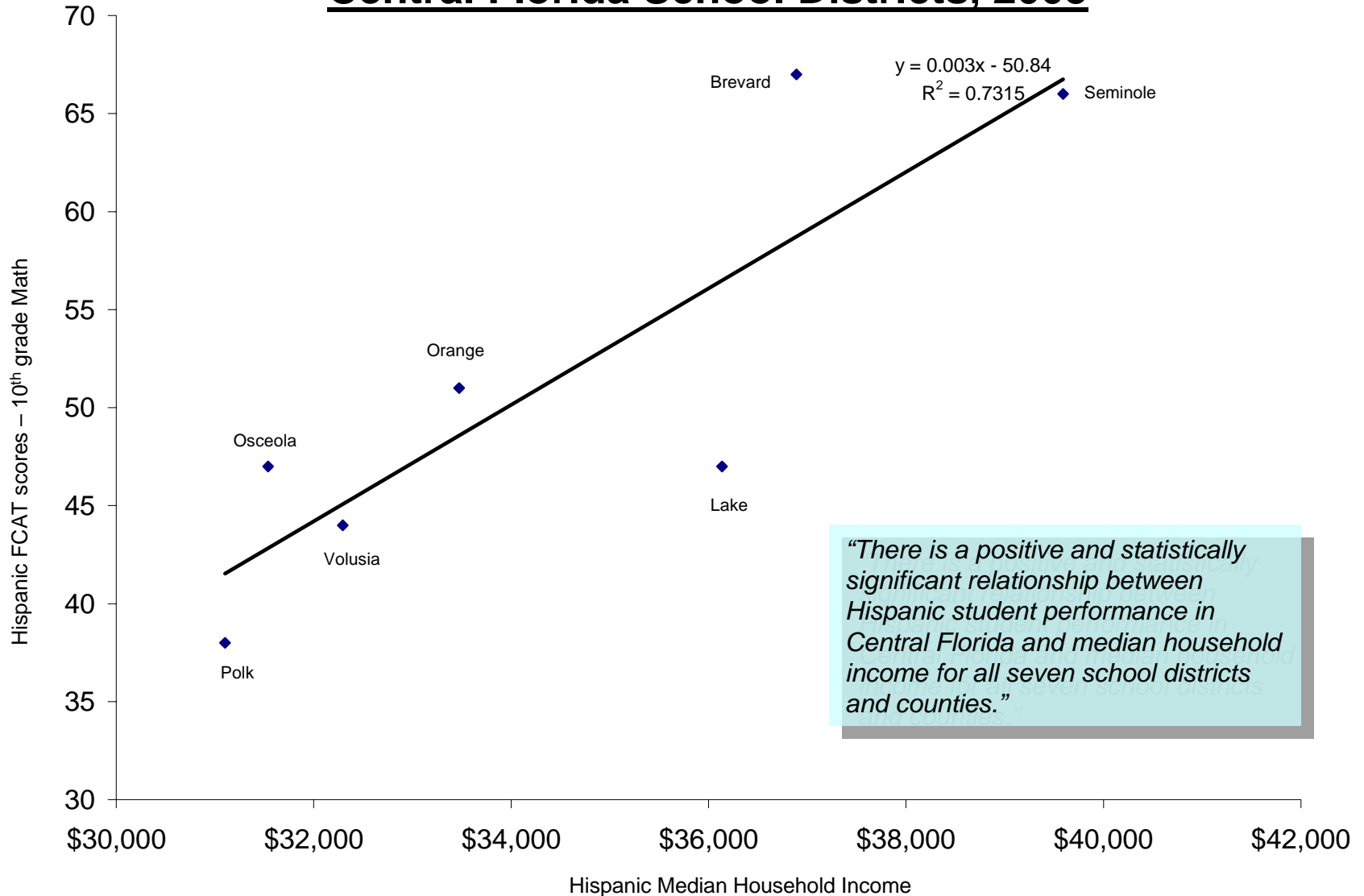


Hispanic FCAT Results in Central Florida, 2005

Percent of Hispanic Students Meeting Minimum (Level 3) Score

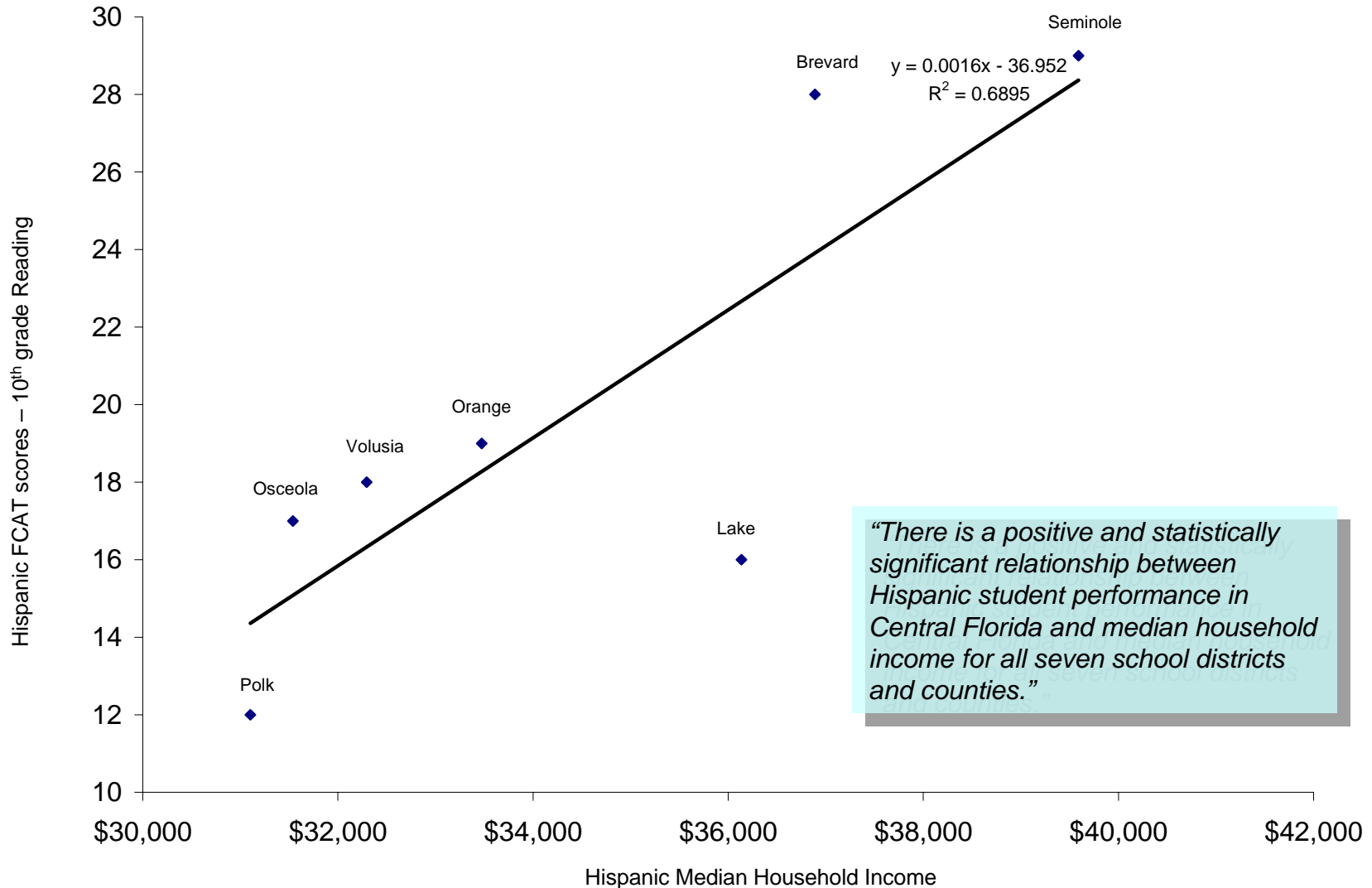


Hispanic FCAT Scores and Hispanic Median Income Central Florida School Districts, 2005



“There is a positive and statistically significant relationship between Hispanic student performance in Central Florida and median household income for all seven school districts and counties.”

Hispanic FCAT Scores and Hispanic Median Income Central Florida School Districts, 2005



Probability of Dropping Out by Race

Central Florida Region, 2002

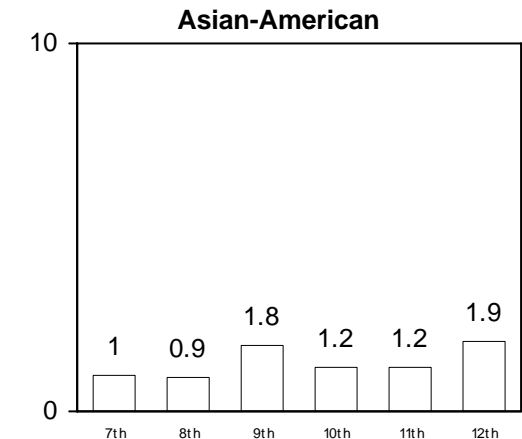
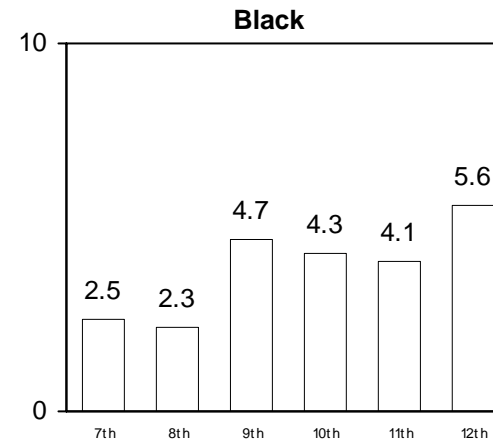
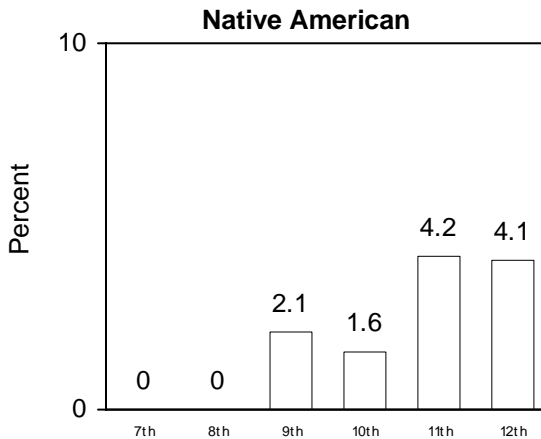
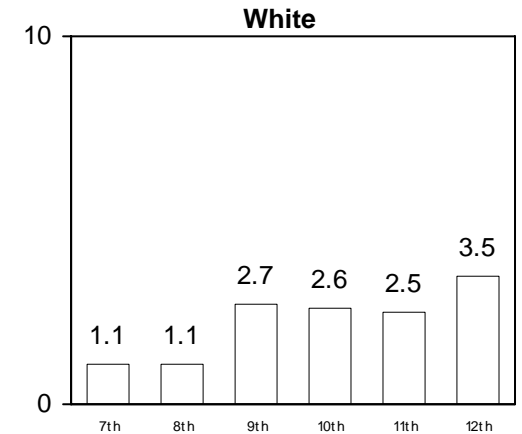
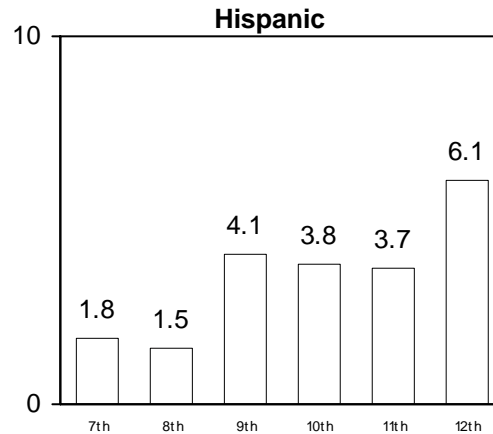
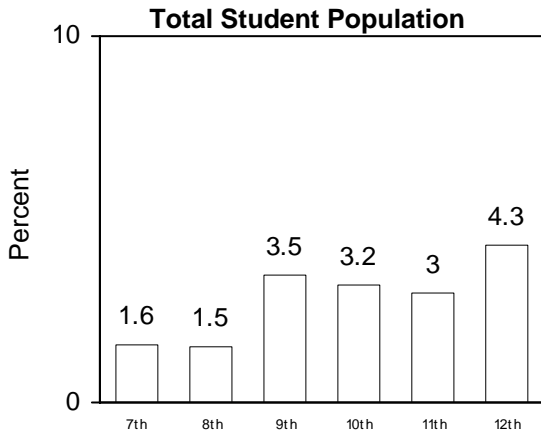
For students in the 7th grade; likelihood of dropping out before the 12th grade

- *1 in 6 students likely to drop out*
- *1 in 5 Hispanic students likely to drop out*
- *1 in 8 white students likely to drop out*
- *1 in 5 black students likely to drop out*
- *Nearly 1 in 11 Asian-American students likely to drop out*
- *1 in 9 Native-American students likely to drop out*

Probability of Dropping Out (%)		
2002	Grade	
	7to12	9to12
Total	15.92	13.30
Latino	19.50	16.65
White	12.87	10.93
Black	21.53	17.54
Asian	8.05	6.19
Nat Am	11.64	11.64

Grade Level-Specific Drop-Out Rates by Race

Central Florida Region, 2002



Post-Secondary Graduation Rates by Race in Central Florida, 2005

	Hispanic	White	Black	Asian
Public				
University of Central Florida	55%	58%	46%	61%
<i># of Bachelor's degree conferred to Hispanics</i>	815	-	-	-
<i># of Master's degree conferred to Hispanics</i>	148	-	-	-
Valencia Community College	29%	42%	19%	48%
<i># of Associates degree conferred to Hispanics</i>	628	-	-	-
Seminole Community College	29%	35%	19%	42%
<i># of Associates degree conferred to Hispanics</i>	121	-	-	-
Private				
Florida Metropolitan University, South Orlando	35%	44%	32%	-
University of Phoenix	20%	15%	5%	-

Orange County SAT Scores by Race/Ethnicity 2006

	2006	
	Verbal	Math
Asian or Pacific Islander	499	545
African American or Black	433	430
White	524	534
Puerto Rican	463	454
Hispanic or Latino	472	472
UCF 75th Percentile	590	640
UCF 25th Percentile	500	540